



MARKETING NEWS

PUBLISHED BY
LEE FOODS • INSTITUTIONAL DEPARTMENT
Kansas City

VOLUME 8

FEBRUARY, 1953

NUMBER 1

University of Missouri Welcomes Student Union After 30-Year Wait

University of Missouri students had to wait a long time—more than thirty years—for a student union building. Dedicated this fall and in full operation is their \$2,100,000 Memorial Student Union Building.

The magnificent Gothic structure, containing a variety of services and activities, has quickly assumed its role as a center of student life.

Adjoining the Memorial tower, completed in the 1920's as a memorial to World War I dead, the student union wing is a memorial too. Names of university war dead of World War II are to be placed on bronze plaques which will be attached to the walls of the entrance hall.

From the entry-way is a corridor that extends through the building, to the right of which may be found the information booth and farther down a counter for dispensing candy bars, cigarettes, magazines and newspapers.

To the left are multiple double-door entrances to a giant lounge some 45 by 95 feet in size and equipped with soft lounging seats as well as straight-backed chairs at tables which may be used for studying or writing purposes. The north and south walls of the lounge are centered with giant log-burning fireplaces.

All flooring in the building is of attractive asphalt tile, except in two areas (1) Memorial hall which is of terrazzo with a marble black and gold MU in the center, and (2) the serving areas where greaseproof rubber tile is used.

The east half of the first floor is given over to a soda fountain and

Mizzou room where 275 persons can be seated—as well as an additional eighty-eight on an outside terrace overlooking the White campus.

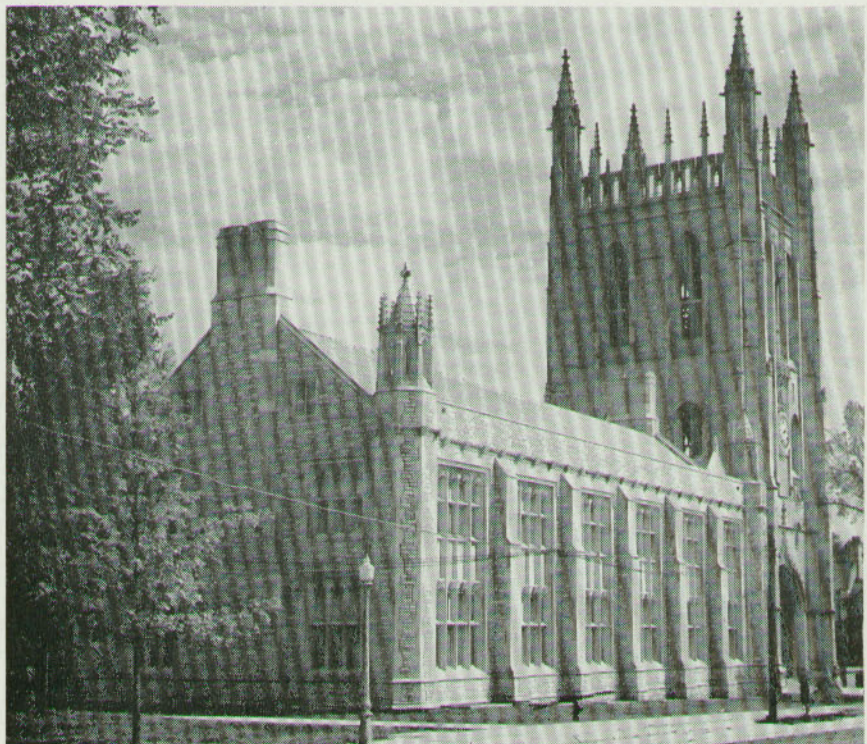
Useful rooms for students also are found on the second floor which has six rooms that can be divided into twelve rooms for student meetings; two of which can double as ballrooms accommodating up to 150 couples.

It is the basement, however, that will get the most student use; it is the "eating center," a cafeteria that

will serve three meals a day and a more formal grill, where food will be served to the tables, that will be open for lunch and dinner.

Located in the southeast section of the basement, the cafeteria has entranceways from the outside as well as from the interior of the building. About 165 persons can be seated at one time and to aid in keeping noise to a minimum the serving unit has been closed off by a wall.

(Continued on Page Six)



The newly completed Student Union wing of the Memorial Tower at the University of Missouri offers new facilities for the students this year. It is the first of two proposed wings for the tall structure that has been left unfinished for thirty some years.