

JAY H. NEFF HALL



*The Home of the School of Journalism of the
University of Missouri*

Directory of the Building

100— { Dean's Offices

101— {

102—Business Office

103—Council Room

104—Library, Reading Room and
Morgue

105—Office

106—News Room

107—Copy Reading Room

108—Office (Entrance through 106)

109—Telegraph and Telephone Room

200—Office

201—Women's Room

202—Classroom

203—Janitor

204—Office

205—Classroom

206—Auditorium

207—Advertising Classroom

BASEMENT

A—Circulation Room

B— { Washrooms

C— {

D—Supply Room

E—Photo-Illustration Laboratory

F—Photo-Illustration Dark Room

G—Machinery Room

H—Foreman's Room

I—Stereotyping Room

J—Storeroom

JAY H. NEFF HALL

Jay H. Neff Hall is the first building to house a school of journalism and its daily newspaper. Classrooms, lecture rooms and laboratories—these last designed to meet the needs of the editorial department of a daily newspaper—are included under the same roof with complete mechanical equipment for publishing the newspaper.

The building is named in honor of the late Jay H. Neff of Kansas City, a pioneer in agricultural journalism, who built the Daily Drivers Telegram of Kansas City and founded upon it the Corn Belt Farm Dailies. Funds for the structure were given by his son, Ward A. Neff, an alumnus of the School of Journalism of the University of Missouri, who is now editor of the Daily Drivers Journal of Chicago, one of the Corn Belt Farm Dailies.

J. P. Jamieson of St. Louis was the architect.

Including the equipment, which was provided by the State Legis-

lature, the building represents an investment of about \$100,000. Work was begun on it in the summer of 1919.

The ground floor, containing the mechanical equipment, was put into use in September, 1920, and the rest of the building in October, 1920.

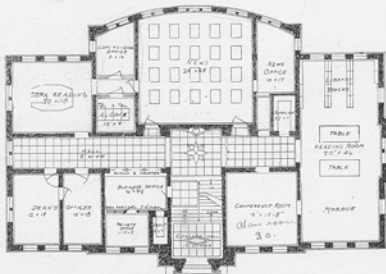
The building is fireproof throughout, being constructed almost entirely of hollow tile, concrete and brick.

THE FIRST FLOOR

Directly opposite the main entrance on the first floor is the News Room, with an office adjoining for the teacher in charge of the reporters. The News Room is the center of activity for these reporters; it is there that assignments are given and news stories written. At one side is an alcove for telegraph and telephone instruments, through which other news reaches the News Room. A chute connects the news desk with the foreman's desk in the composing room below.

The Copy Reading Room is in the northwest corner of this floor. A passageway connects it with the News Room and with the office of the teacher in charge of copy reading. All copy turned in at the news desk goes to the Copy Reading Room for editing and headlining. It then goes back to the news desk and is sent through the chute to the composing room.

Across the main corridor to the south of the Copy Reading



First Floor Plan

[page right]

Room are the offices of the Dean of the School of Journalism. Next on the east, beside the main entrance, are the business office of the Columbia Evening Missourian and the private office of the Missourian's manager. The Missourian is the daily newspaper which serves as the school's laboratory.

Just east of the main entrance is the Council Room. Class meetings, committee meetings, meetings of professional fraternities, etc., are held in the Council Room. The students furnished this room.

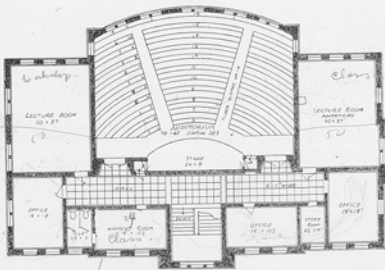
The east end of the first floor is devoted to the library, reading room and morgue. The room is lighted from three sides. It contains files of newspapers from large cities of the United States and foreign countries, a long list of smaller newspapers from Missouri cities and towns, general magazines, magazines devoted to journalistic topics (including advertising and printing), reference books, and books on journalism (again including advertising and printing).

THE SECOND FLOOR

The central feature of the second floor is a modern auditorium directly over the News Room. This room seats 300 persons. It is used for the larger lecture classes, and also for conventions held at the School of Journalism. It will be used for the day sessions of Journalism Week, which is attended each spring by leaders in journalism from all parts of the United States and from foreign countries.

The second floor also is headquarters for the school's instruction in advertising. The large lecture room in the northwest corner is used for advertising classes. Next to this room, in the southwest corner of the building, is the office of the teacher in charge of advertising. Just east of the stairs on this floor is a room used by student salesmen of advertising.

The Women's Room on this floor corresponds to the Council



Plan

Second Floor Plan

Room on the first floor. It is used by women students in the school for meetings of all sorts. It was furnished by the women in the school.

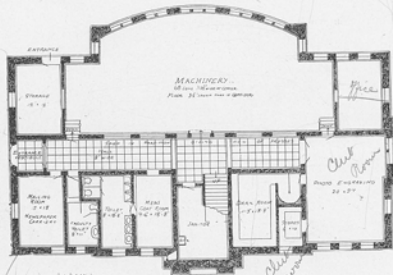
At the east end of this floor are a large lecture room and an adjoining office which will be used for teaching specialized, or trade, journalism and agricultural journalism.

THE BASEMENT

In the basement, which houses the mechanical equipment of the school, the problem was faced of permitting easy inspection of the printing processes by students and others, without having the printers hampered by onlookers. The problem was solved by putting the composing and press room on a level several feet lower than the main corridor and using a glass partition. This gives persons in the corridor a clear view of the printing of the paper.

The printing equipment includes two linotypes and a Duplex perfecting press which will print four, six or eight pages at once. The *Missourian's* customary size is six or eight 8-column pages.

The space at the east end of the composing and press room has been divided into a room for the mechanical foreman and a stereotyping room. Both news and advertising illustrations are cast from mats for use in the *Missourian*.



Basement Plan

The southeast corner of the building houses the photo-engraving plant. A dark room is adjoining. These rooms are used for the developing of photographs and the making of halftones.

Circulation of the *Missourian* is directed from the mailing room in the southwest corner of this floor, just across the corridor from where the press delivers the printed, folded and counted papers.

This room includes the office of the superintendent of carriers. The newsboys get their papers here, and papers for out-of-town subscribers are prepared for the postoffice here.

This floor has two entrances, one on the west and one at the northwest. The latter opens on a driveway so that paper and other supplies may be delivered at the door.

2 Labs.

1 workshop - 30.

1 classroom - 54

1 " room - 35 1/2

1 " " - 30

3 Offices -

Business office & Dean's office

Printer, lab

Club rooms.

\$ 136,000

$46 \times 90 \times 47.8 = 194550 \text{ cu ft}$

$\times 70.$