

**BASKETBALL**

**Missouri**

**vs.**

**Ohio University**

**November 25, 1972**

First Official Game In

**W. E. HEARNES MULTIPURPOSE BUILDING**



**OFFICIAL SOUVENIR PROGRAM**

(from  
C: 31/00/3 FF 11 30r1)

## 1972-73 UNIVERSITY OF MISSOURI BASKETBALL SQUAD



**KNEELING:** Asst. Coach Don Kelley, Head Coach Norm Stewart, and Asst. Coach Dan McCleary. **FIRST ROW:** Kevin King, Calvin Patterson, Charley Palmer, Mike Jeffries, Steve Blind, Glenn Robinson, Jerry Stock, Orv Salmon, Trainer Skip Pickering. **SECOND ROW:** Gary Link, Felix Jermin, Bill Flamank, La-Mont Turner, Gail Wulf, Rick Atzen, John Brown, Al Eberhard, Student Assistant Gary Legner.

# Columbia Printing Company

Commercial Printing

**JOHN GOLSON**

409 East Walnut St.

Phone 449-5320



FORUM SHOPPING CENTER  
COLUMBIA, MISSOURI

Phone 443-3175

COUNSELLORS  
APPRAISERS  
SALES LEASING  
MANAGEMENT



8th & Cherry And  
Broadway Shopping Center

**Complete Banking Service**

**Established 1886**

Member Federal Deposit Insurance  
Corporation

## TONIGHT'S GAME

Coach Norm Stewart's Tigers blazed new trails in Missouri basketball history last season, and the next chapter, which begins tonight in beautiful, new 12,600-seat Hearnese Multipurpose Building, could be even better than the last.

The 21-6 record posted by the Tigers last year was the most wins in history by a Missouri team, and the Bengals went to the NIT for the first time while finishing second in the Big Eight and 19th in the national ratings.

Three starters, 6-7 John Brown, 6-5 Al Eberhard and 6-3 Mike Jeffries return along with lettermen Orv Salmon (6-0), Gary Link (6-5) and Jerry Stock (6-0). In addition, 6-5 sophomore Felix Jerman and 6-7 freshman LaMont Turner have played well in early practice sessions.

Brown was selected to the U. S. Olympic team last summer, but a broken bone in his left foot prevented him from going to the Games in Munich, Germany. He missed the first two weeks of practice for Missouri. However, the Dixon, Mo., native, who was named to Street & Smith's preseason all-America team, now appears ready to play at full speed.

He will be joined on the front line by Eberhard and Jerman. Jeffries, who is the squad's best passer, has moved back to the guard position he played as a sophomore. Salmon will quarterback Missouri's offense from the other guard position.

The Tigers' depth may be improved this season

with the experienced Link ready to come in off the bench, and Steve Blind to provide extra shooting punch at guard. Though inexperienced, Turner has the ability to step in and play varsity ball as a freshman.

Former redshirts Rick Atzen (6-9) and Gail Wolf (6-11) can be inserted in the lineup for added height on the front line. When that happens, Stewart may move Brown to his natural position at forward.

Mizzou and Ohio have played wild games each of the last two years. The Tigers won 91-83 in double overtime two years ago in Columbia, and they took a 78-76 decision last season at Athens, O.

The Bobcats return three starters from the team which won the Mid-American conference title last season. Tom Riccardi, a 6-6 forward, averaged 12.4 points a game last season, and Dave Ball, a 6-6 forward, and Dennis Rusch, a 6-8 center, both averaged nine points a game.

All three could be overshadowed by 6-4 freshman guard Walter Luckett who averaged 39.8 points a game last season to break NBA pro Calvin Murphy's New England scoring records. Luckett became the third player to make the New York News all-star team three years in succession. Kareem Abdul Jabbar of the Milwaukee Bucks and Dean Meminger of the New York Knicks were the others.

It all adds up to an exciting 1972-73 season opener which all will enjoy, especially since there is a good view from every seat in the new arena.

Next home game: Louisiana Tech, Nov. 28, 7.35 p.m.

### UNIVERSITY OF MISSOURI 1971-72 Final Basketball Statistics (Won 21, Lost 6)

Name	G	FG-FGA	FG%	FT-FTA	FT%	REB	PF	PTS	AVG
John Brown	27	212-380	55.8	162-215	75.3	283	107	586	21.7
Al Eberhard	27	128-264	48.5	120-157	76.4	242	82	376	13.9
Greg Flaker	27	136-276	49.3	79-99	79.8	95	63	351	13.0
Mike Jeffries	27	107-238	44.9	73-99	73.7	186	96	287	10.6
Mike Griffin	26	82-192	42.7	58-84	69.0	63	60	222	8.5
Orv Salmon	27	28-75	37.3	52-59	88.1	31	30	108	4.0
Gary Link	19	16-34	47.1	18-31	54.5	27	10	50	2.6
Bob Allen	15	12-32	37.5	12-19	63.2	29	23	36	2.4
Jerry Stock	21	9-23	39.1	4-6	66.7	15	21	22	1.1
Steve Blind	7	4-5	80.0	7-8	87.5	4	4	15	2.1
Cal Patterson	5	2-5	40.0	3-5	60.0	2	1	7	1.4
Bill Flamank	9	1-4	25.0	0-4	00.0	12	2	2	0.0
M.U.	27	740-1544	47.9	589-788	74.8	995	503	2069	76.7
OPP.	27	714-1665	42.9	432-658	65.6	857	589	1860	68.9

**YOUR SAVINGS INSURED  
PLUS LIBERAL DIVIDENDS  
Boone National  
Savings  
& LOAN ASSOCIATION**

901 East Broadway  
Columbia



a cordial invitation  
to visit columbia's smartest shop

*Dene Glenn*

- SHOES FOR THE FAMILY
- WOMEN'S WEAR
- MEN'S WEAR

on broadway . . . in columbia

## *New home of Tiger Basketball*

# Warren E. Hearnnes

Missouri's basketball team brings to a close one romance and starts a new affair tonight. Norm Stewart's roundballers have packed up their gear and left the friendly confines of Brewer Fieldhouse, affectionately known as the "barn", and moved into the new Warren E. Hearnnes Multipurpose Building.

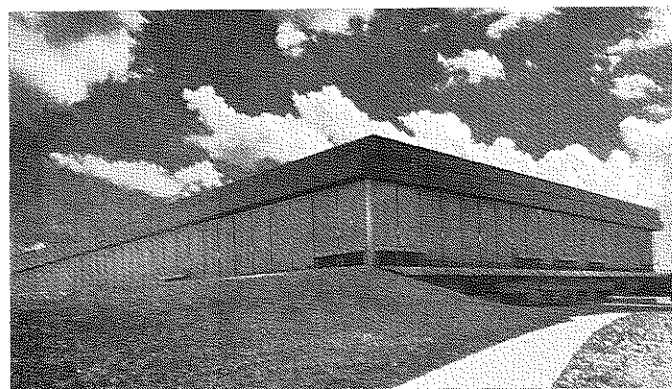
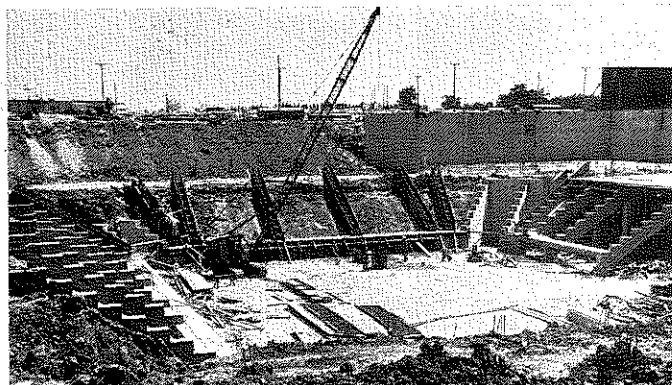
Left behind in the dusty interior of Brewer was 42 years of memories and the long echoing cheers of loyal Missouri fans. In recent years Mizzou's fans have had much to cheer about, since the Tigers won 43 of their last 47 ballgames in Brewer. However, tonight marks the beginning of a new era in basketball at Missouri. The past victories in Brewer offer no forecast for the future. Only Mizzou's future teams will determine how cordial the new Hearnnes Building will be to Missouri's basketball fortunes.

The massive, 4½-acre Hearnnes Multipurpose Building was started in the spring of 1969 and was not open to the public until July 24, 1972. The new home of Tiger athletics is true to its name, providing a broad source of diversity, flexibility and adequacy for the entire community.

The Multipurpose Building offers an impressive rundown of vital statistics. The entire building covers 4.4 acres; the total floor space on the four levels of the auditorium and three levels of the fieldhouse is over 324,000 square feet, or about seven acres. The overall dimensions outside are 546 feet north to south, and 352 feet from east to west.

The \$11 million complex is one of the largest structures of its type in the country. Topping Memorial Stadium by 40 feet, the rectangular building actually houses two separate facilities under one roof, both uniquely adaptable to many activities.

The basketball arena seats approximately 12,500 people. Plastic folding type theater seats are installed in the two lowest tiers in the auditorium and in groups of seats on the topmost level which are especially designed for partitioning into separate rooms. Each corner contains such a group of seats, convertible into smaller lecture rooms seating 450 persons each. The third highest tier and the other seats on the topmost tier are provided with bleacher type seats.



# Multipurpose Building

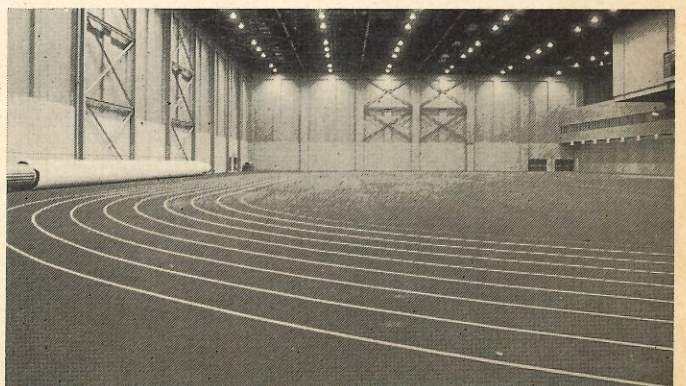
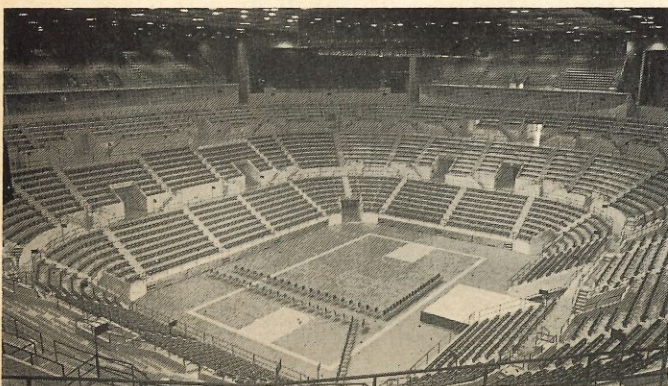
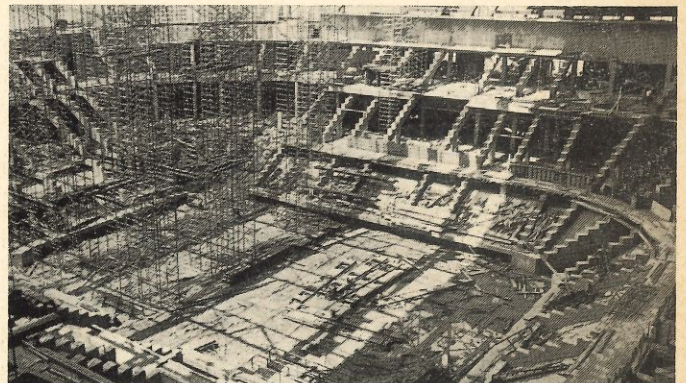
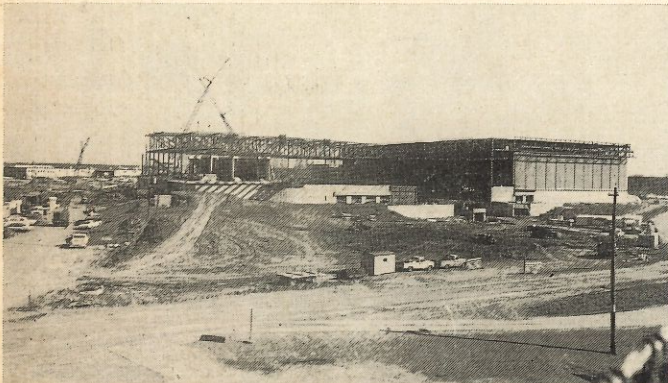
The auditorium is well designed for color television pick-up, with 200 foot-candles of illumination possible on the playing court. Over 98 miles of electrical cable and wire connect 6,174 varying types of lamps. Modern equipment, including a sound and light cloud 85 feet above the auditorium floor, will handle speakers for the public address system and special lights. The playing surface on the auditorium floor is a special Tartan surface that requires no special cover or protection, yet is resilient enough to reduce injuries.

The other part of this tandem building, the fieldhouse, is at grade level, two levels above the floor of the basketball arena. The fieldhouse features a 220 yard oval running track with a synthetic, rubberized Tartan running surface. A portable section of synthetic turf will also cover the inside of the oval track making the fieldhouse available for football and baseball practice in inclement weather, or in preparation for a game on synthetic turf.

The athletic department offices are located be-

tween the fieldhouse and arena on the upper concourse, which is three floors above the basketball court. They offer a complete facility, with a space for the athletic director and his staff, coaches, the business and ticket offices, and the sports information department. Directly below the athletic offices there are lockers, equipment storage, showers, and other accessory rooms supportive to the athletic program. The new quarters make Rothwell Gymnasium and Brewer Fieldhouse entirely available for the Physical Education Department.

Besides providing excellent facilities for athletic practices and contests the auditorium and fieldhouse are also designed to meet other needs. To add to its multiplicity the complex can be used for concerts, conventions, circuses, or any other activity requiring a large indoor area with a large seating capacity. The Hearnes Building not only serves intercollegiate athletics, but the University and the town of Columbia.







# Powell Trailer Sales, Inc.

Hwy. 63 & VV North

Columbia, Missouri 65201

FORREST PARK    DETROITER    MARLETTE

STAR                      CAMERON

314-449-4398

Let's Go — Tigers

## Sudden Service Drive-In

CLEANER & SHIRT LAUNDRY

126 So. 8th St.

Columbia, Mo.

TUXEDO RENTAL

2-DAY SERVICE

PHONE 442-6107

WALT MARCH

BILL HUDSON

## OHIO UNIVERSITY SQUAD

Defending Mid-American Conference Champions



FIRST ROW, L—R: Skip Vosler, trainer; Ronnie Friedman, Mgr.; Mike Corde; Alan Talbert; Bob Huggins; Bill Brown, captain (with ball); Walter Lockett; Phil Miller (no longer on squad); Dennis Thompson; Jeff Langue, and Ed Kopecky, Mgrs. BACK ROW, L—R: Dale Bandy, George Klein, Asst. Coaches; George Green; Tom Riccardi; Scott Love; Doug Jauch; Dennis Rusch; Dave Ball; Tom Hester; Chris Collins; Ken Kowall, Grad. asst. and head coach Jim Snyder.

### THE BANK OF EXPERIENCE

Complete Banking  
and  
Trust Service

### FIRST NATIONAL BANK

COLUMBIA, MISSOURI

Member - FDIC

### ALL STATES MOTEL HOWARD JOHNSON'S MOTOR LODGE

### THE TRAVELIER MOTELS

Operated by Missouri Grads

Leslie T. Proctor

Charles J. Proctor—Earl L. Proctor

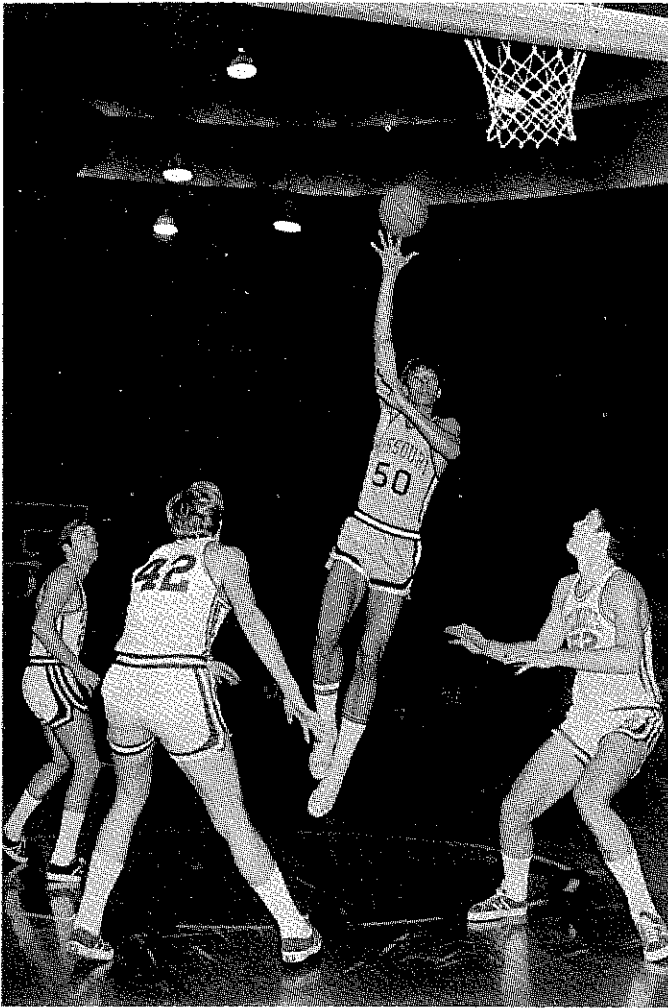
FULTON—COLUMBIA—MACON

## BARGAIN BARN

Everything for Less

Columbia, Missouri

# MIZZOU'S ALL-AMERICAN CANDIDATE



John Brown, Mizzou's all-American candidate, has already started the season off with a bang. Brown was named to Street & Smith's basketball yearbook pre-season all-American team. His selection had

solid backing in that last year he led Missouri to one of its most successful seasons ever, and placed in all four offensive categories in Big Eight statistics.

Capping his junior season, the 6-ft. 7 Brown was named to the Basketball News second all-America team. He was a District Five first team choice—and a consensus Big Eight first teamer.

Sparking Coach Norm Stewart's Tigers to a 21-6 record—most wins in the school's history—and a post-season bid to the National Invitation Tournament, Brown was the Black & Gold's leading scorer and rebounder. He averaged 21.7 points and 10½ rebounds a game.

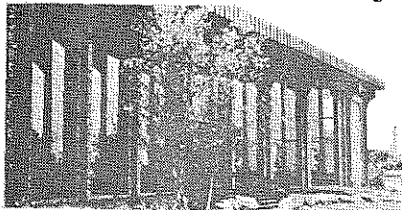
Selected to the Olympic basketball team this summer, the Dixon, Mo. native suffered a broken bone in his left foot and was unable to make the trip to Munich for the Games. However, Brown now is at full speed after missing the first two weeks of practice.

After two varsity seasons, the sandy-haired shooter now stands 11th on Missouri's all-time scoring tables. With a two-year total of 855 points, he figures to break Charlie Henke's career scoring mark of 1,338 points next year.

Highlights of Brown's junior campaign were his selection as the Big Eight tournament's Most Valuable Player, his all-around offensive domination of Big Eight statistics, and a 34-point single-game scoring high against Kentucky.

In the Big Eight picture, Brown led in field-goal proficiency, was second in scoring and rebounding—and eighth in free-throw percentage.

A personal invitation to discover the wonderful new world of Banking...



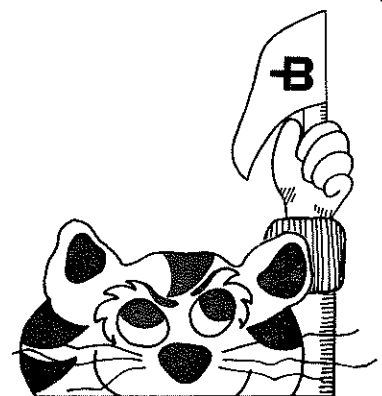
**COLUMBIA NATIONAL BANK**  
500 Business Loop 70 West Phone 314-449-3181  
A Commerce Bancshares Affiliate

Your attention is called to the fact that **SMOKING IS PROHIBITED** in the seating area of the auditorium. Those desiring to smoke may do so in the concourse area.

**CONCESSION** stands are located on the main concourse—between B and C levels.

**RESTROOMS** may be found in each quadrant of the main concourse and upper concourse levels.

GO TIGERS!



**Boone County Bank**

## NEW RULES CHANGES

1. A player who commits a foul must raise one hand only, and he must lower it in a sportsmanlike manner. The penalty for failure to do this is a technical foul.
2. When a non-shooting foul is committed, the team which was fouled will be awarded the ball out of bounds until the bonus rule goes into effect. In other words, there will be no one shot free throws unless a foul is committed on a successful try for a field goal and a player has a chance at a three point play or unless a technical foul is committed.
3. A team in possession of the ball must attempt a shot to score within 30 seconds of gaining possession of the ball. The ball must leave the player's hand prior to the expiration of the 30 seconds, and it must hit the rim. If a defensive player causes the ball to go out of bounds, the 30-second clock shall be stopped, and the offensive team shall have the unexpired time or 10 seconds, whichever is longer. If during a half there is less than 30 seconds left to play, the 30-second clock will not be in action.

## 1972-73 TIGER SCHEDULE

### NOVEMBER

25 OHIO UNIVERSITY  
28 LOUISIANA TECH

15 UNIVERSITY OF COLORADO  
20 UNIVERSITY OF KANSAS  
27 University of Nebraska at Lincoln  
30 Oklahoma State U. at Stillwater

### DECEMBER

1 U. OF CALIFORNIA-DAVIS  
6 PURDUE UNIVERSITY  
9 Ohio State U. at Columbus, Ohio  
15-16 Volunteer Classic at Knoxville, Tennessee  
19 U. OF SOUTH ALABAMA  
27-30 27th Annual Big 8 Pre-Season Tournament at Kansas City

### FEBRUARY

5 University of Oklahoma at Norman  
10 IOWA STATE UNIVERSITY  
12 UNIVERSITY OF OKLAHOMA  
17 University of Colorado at Boulder  
20 KANSAS STATE UNIVERSITY  
27 University of Kansas at Lawrence

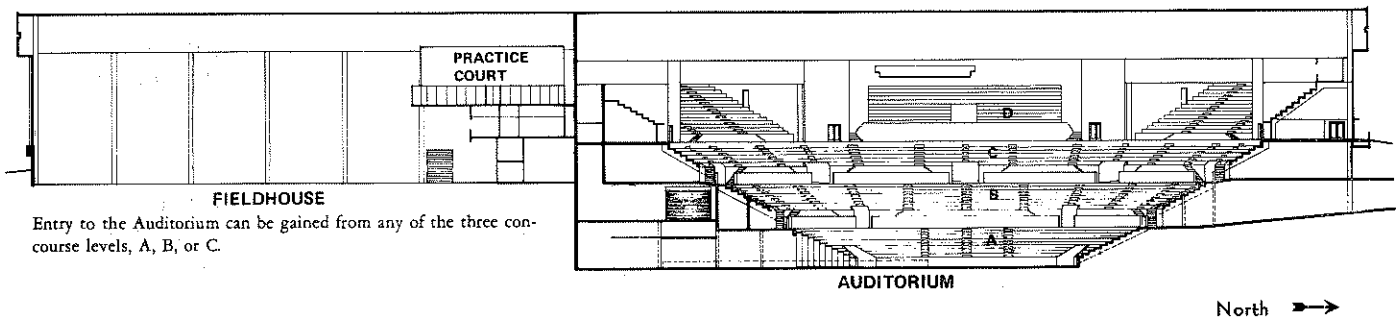
### JANUARY

8 SOUTHERN METHODIST U. AT DALLAS  
13 Kansas State University at Manhattan

### MARCH

3 OKLAHOMA STATE U.  
5 Iowa State University at Ames  
10 UNIVERSITY OF NEBRASKA

(Home Games In Capital Letters)



FIELDHOUSE  
Entry to the Auditorium can be gained from any of the three concourse levels, A, B, or C.

AUDITORIUM

North →



Columbia, Missouri-WEST

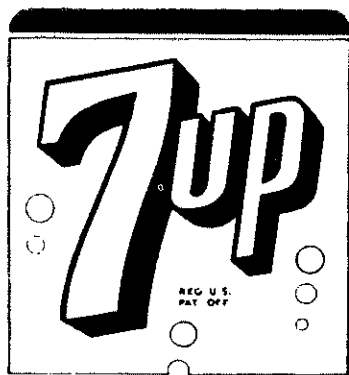
Columbia, Missouri-EAST

I-70 at Stadium  
Boulevard  
Telephone:  
314/422-0181



Providence  
Road & I-70  
Telephone:  
314/449-2491

REG. U.S. PAT. OFF.



MOBERLY, MO.

REGULAR  
HAIRCUTS  
RAZOR CUTS  
HAIR STYLING

Dial 442-4844



Hrs. Tues. thru Fri. 8 till 5:30 Sat. 8 till 5  
1400 W. BLVD S. COLUMBIA, MO.

All we can hear is . . .  
**GO TIGERS GO!!!**

Local Tigers keep up  
with the movies at a

**COMMONWEALTH  
THEATRE!**

Missouri Uptown  
Hall Cinema  
Sky-Hi Drive-In

## THE HEAD COACH

**NORM STEWART**, head basketball coach—In five years as Missouri's head basketball coach, Norm Stewart has taken the Tigers to their greatest heights. Starting with a lowly squad, Stewart's clubs have won more games each year.



**NORM STEWART**

The 1971-72 season was the best in Missouri history. The Tigers built a 21-6 record, finished second in the Big Eight, won the loop's pre-season tournament and accepted a bid to the National Invitation Tournament in New York City. In addition, the Bengals were 19th in the final UPI rankings.

For his efforts, Stewart was named Big Eight and NCAA District 5 Coach-of-the-Year. Further recognition came in the form of an invitation from Partners of the Americas, a private agency, to be one of 17 U.S. coaches to stage basketball clinics in South America. Stewart's teaching assignment was in Belem, Brazil in June.

While at Missouri, the jut-jawed blond has developed all-Big Eight players Don Tomlinson, Henry Smith and John Brown. Brown was selected to the 1972 Olympic team as well, though an injury prevented him from making the trip to Munich, Germany.

Stewart was a player of note himself. Playing for Missouri, he achieved all-America honors in the 1955-56 season when he led the Big Seven in scoring. He also pitched on Missouri's 1954 NCAA champion baseball team.

After brief stints with the St. Louis Hawks professional basketball team and a Baltimore Orioles farm club, Stewart returned to Missouri where he spent four years as assistant basketball and baseball coach.

His first head job was at the University of Northern Iowa where he compiled a six-year record of 97 wins and 42 losses including two conference championships and a fourth place finish at the 1963-64 NCAA College Division tournament.

Since the 37-year old native of Shelbyville returned to Mizou, his won-lost mark is 77-53, giving him an overall coaching record of 174 wins and 95 losses.

Stewart holds two degrees, both from Missouri. In 1956, he was listed in "Who's Who Among Students in American Colleges and Universities" and elected to the University's "Mystical Seven." Recently, he received a faculty-alumni outstanding achievement award.

Stewart and his wife, the former Virginia Zimmerly of Kansas City, have three children—Jeffrey, 15; Lindsey Scott, 12, and Laura, 8.

## ASSISTANT COACHES

**DON KELLEY**, assistant basketball coach—Assistant varsity coach Don Kelley is beginning his second season at Missouri, and he has accumulated 14 years of college coaching experience.



**DON KELLEY**

Before entering the coaching profession, Kelley was a two-sport letterman at Ohio State University. He captained the Buckeyes' basketball team and earned all-Big Ten and All-America honors as a first baseman on the OSU baseball squad.

Kelley spent a year in the Cleveland Indians baseball organization after his graduation in 1956 and then signed on as a graduate assistant cage coach at his alma mater. One year later, he took a head job at Celina, Ohio High School.

Kelley moved back into the college coaching ranks in 1959 at Marietta (Ohio) College as an assistant. He became head basketball coach at Marietta in 1961 and was successful in keeping his teams in the top half of the Ohio Conference standings despite operating without the benefit of athletic scholarships.

After 11 years as head man at Marietta, Kelley moved to Iowa State for a year where he was an assistant basketball coach. When the varsity assistant spot opened up at Missouri, head coach Norm Stewart wasted no time in convincing Kelley to join him at Missouri where he has become an important part of the Tigers' successful program.

Kelley is married to the former Mary Virginia Shook. They have a son, David Gene, 4.

**DAN McCLEARY**, freshman basketball coach—Last season was assistant coach Dan McCleary's third on Missouri's basketball staff, and he took charge of the freshman team. McCleary's yearlings posted a fine 9-3 record.



**DAN McCLEARY**

This season McCleary will handle the junior varsity which was created by an NCAA ruling making freshmen eligible for varsity play.

In addition to his duties with the junior varsity, McCleary handles in-state recruiting and serves as academic advisor to the players.

McCleary played his college basketball at Northern Iowa University from 1962-66 while Norm Stewart was head coach there. He was a member of the team which finished fourth in the NCAA Small College Division tournament in

1964.

After graduation, McCleary served as a graduate assistant to Stewart for one year. He took over the head job at Muscatine, Ia. Junior College in 1967 where the three previous teams had a combined won-lost mark of 7-52.

In his two years as head coach, McCleary reversed the trend at Muscatine by running up a 29-21 record. His 1968-69 squad led the junior colleges in Iowa with a defensive average of 66.5. The 28-year old native of Davenport, Ia., is single.



**Best wishes and good luck  
from one great team to another!**

**ANHEUSER - BUSCH, INC.**

**N. H. SCHEPPERS DISTRIBUTING COMPANY**

*Distributor of Budweiser®, Michelob® and Busch® Beers*

Columbia, Mo.

Jefferson City, Mo.

---